

DESCRIPTION:

This document illustrates how to replace the Control & Power Board in Models 691, 791, & 891.

0027671SK IS NO LONGER AVAILABLE FROM SUPPLIER

For instructional purposes, model 691-16 is shown in photos. However, instructions for the 791 & 891 are similar.

Model 791 Serial #s

- 0027671SK used in the following serial numbers ONLY:
 -P43478-P49250
 -P54914-P55061
- 0027795SK:
 -Used in all other serial numbers

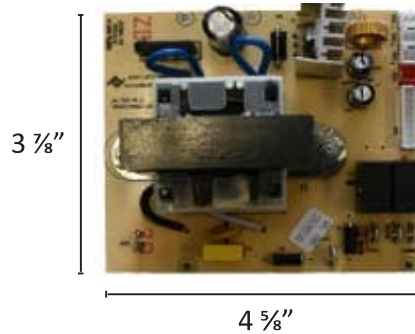
Model 891 Serial #s

- 0027671SK used in the following serial numbers ONLY:
 -J050660-J050683
- 0027795SK:
 -Used in all other serial numbers

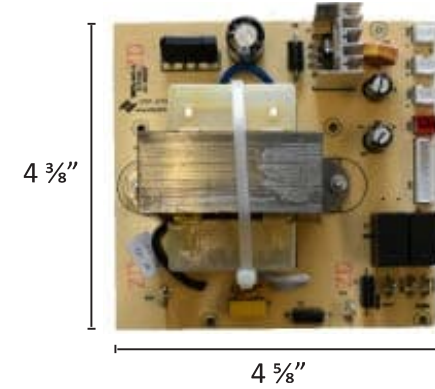
Model 691

- 0027795SK:
 -Used in all serial numbers

0027671SK Power Board



0027795SK Power Board



Control Board



*Each kit contains the same control board that is shown on the left.

TOOLS NEEDED

- #2 Phillips Screwdriver
- 7mm Socket and Ratchet
- Ratchet Extension



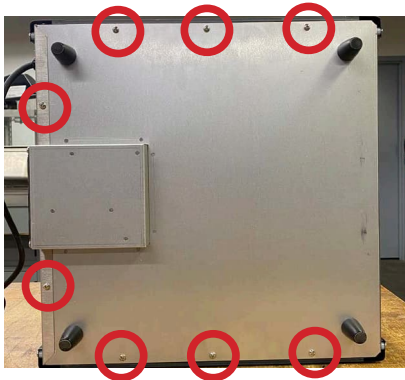
Please review this document thoroughly before beginning repairs. Wisco recommends using qualified local service agents. Wisco does not have authorized service agents.



UNPLUG UNIT FROM OUTLET AND ALLOW TO COOL

Power Board Replacement

- 1** Remove the racks from inside of the unit and then place the unit on its side. Remove (8) screws from the bottom panel and (2) screws from the faceplate of the control board; then remove the bottom panel.



- 2** Unplug the LED assemblies, temperature sensor, & control board from the power board.

Note:

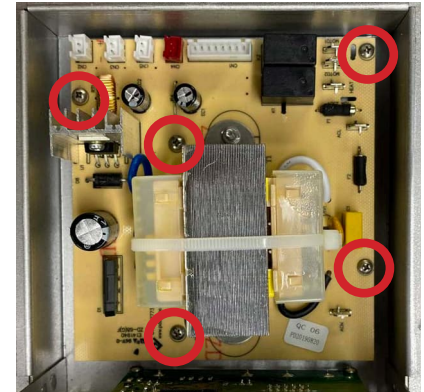
LED Assemblies plug into locations CN2, CN3, & CN5

Temp. Sensor plugs into CN4

Control Board plugs into CN1

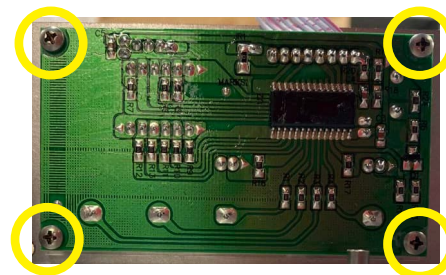


- 3** Remove (5) screws from the power board. Using the new board, complete all steps in reverse order and you have successfully replaced your units power board. Your unit is now ready for operation.



Control Board Replacement

- 1** Follow steps 1-3 above to access the control board.
- 2** Remove (4) screws from the control board. Using the new board, complete all steps in reverse order and you have successfully replaced your units control board. Your unit is now ready for operation.





WISCO INDUSTRIES, INC.

PHONE : 608.835.3106 • TOLL FREE : 800.999.4726 • FAX: 608.835.7399 • www.wiscoind.com

**MODEL 691/791/891
CONTROL & POWER BOARD REPLACEMENT
0027671SK OR 0027795SK**

