



WISCO INDUSTRIES, INC.

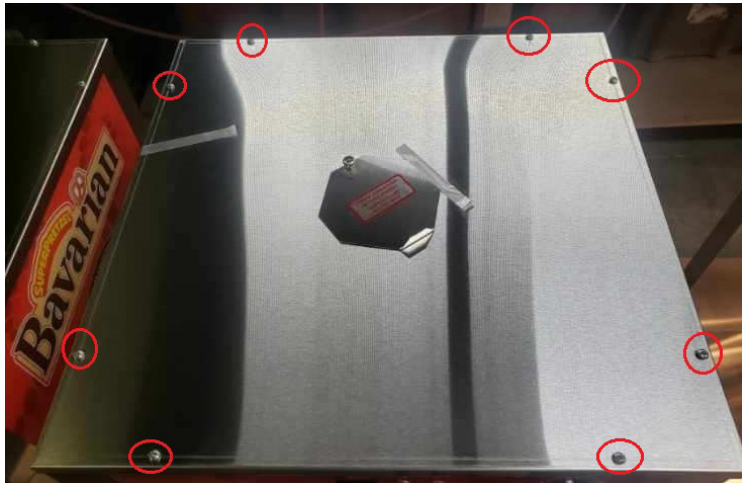
PHONE : 608.835.3106 • TOLL FREE : 800.999.4726 • FAX: 608.835.7399 • www.wiscoind.com

**MODELS 695/850
WATER PAN
CLEANING INSTRUCTIONS**

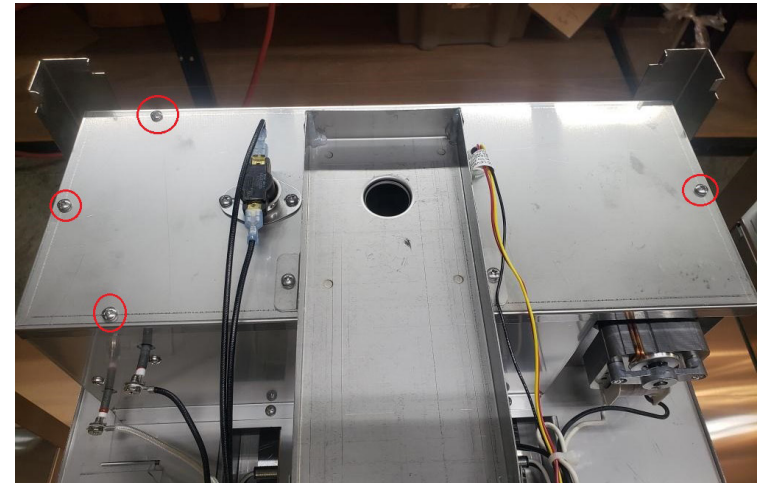
DESCRIPTION:

This document shows how to clean the water pan and float switch in the 695 and 850 models.

NOTE: UNPLUG UNIT BEFORE PREFORMING ANY MAINTENANCE.



Remove the 8 screws securing the to panel in place.
Lift panel off the unit once screws are removed.



Remove 4 screws holding the air chamber cover in place.
Remove cover once screws are removed.

Please review this document thoroughly before beginning repairs. Wisco recommends using qualified local service agents. Wisco does not have authorized service agents.



WISCO INDUSTRIES, INC.

PHONE : 608.835.3106 • TOLL FREE : 800.999.4726 • FAX: 608.835.7399 • www.wiscoind.com

**MODELS 695/850
WATER PAN
CLEANING INSTRUCTIONS**



Wipe the float switch clean with hot soapy water.



Remove pan, or clean in place with hot soapy water.

Once parts have been cleaned, place pan back into place. And assemble in reverse order. Once all parts are reinstalled you are ready for operation.