



WISCO INDUSTRIES, INC.

PHONE : 608.835.3106 • TOLL FREE : 800.999.4726 • FAX : 608.835.7399 • www.wiscoind.com

MODEL 520
REGULATING THERMOSTAT REPLACEMENT
0022841SK

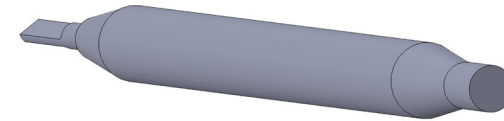
DESCRIPTION

This document illustrates how to replace the Regulating Thermostat for model 520.



TOOLS NEEDED

- #2 Phillips Screwdriver
- Small, Flathead Screwdriver
- Pliers



PARTS INCLUDED

- (1) 0022841 - Regulating Thermostat



WISCO INDUSTRIES, INC.

PHONE: 608.835.3106 • TOLL FREE: 800.999.4726 • FAX: 608.835.7399 • www.wiscoind.com

MODEL 520
REGULATING THERMOSTAT REPLACEMENT
0022841SK



UNPLUG UNIT FROM OUTLET AND ALLOW TO COOL

- 1** Remove oven door by opening the door all the way, lifting up to separate from latches, and pull out



- 2** Remove support rack from the inside of the oven by lifting the rack up, and pulling it out from the latches that hold it in place. (For better assistance on how the latches are laid out, see the photo)



- 3** Remove (3) panel screws from inside of the oven. Once completed, flip the unit over.



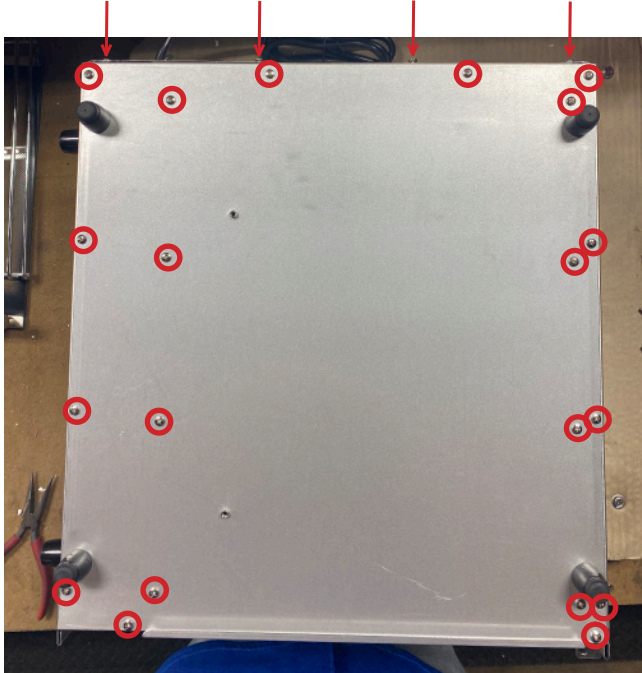


WISCO INDUSTRIES, INC.

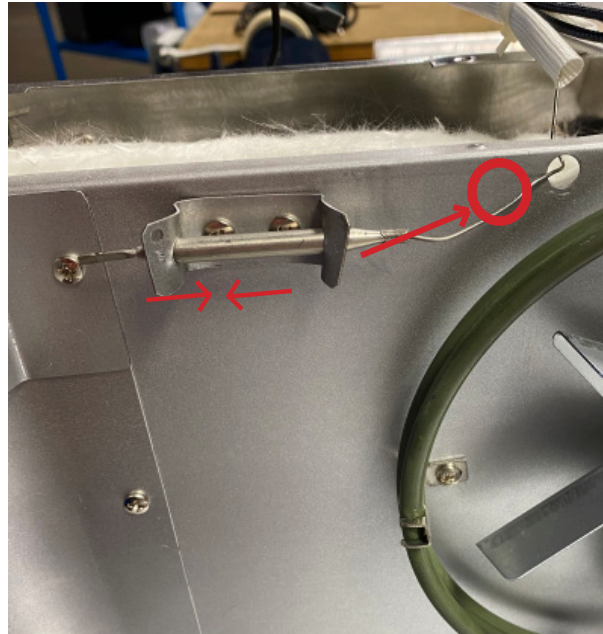
PHONE: 608.835.3106 • TOLL FREE: 800.999.4726 • FAX: 608.835.7399 • www.wiscoind.com

MODEL 520
REGULATING THERMOSTAT REPLACEMENT
0022841SK

- 4** Remove (20) screws from the bottom of the oven & (4) screws from the back of the oven (located by the arrows). Once completed, remove the bottom of the oven.



- 5** Remove the thermostat by pinching the metal bracket in (see photo) and then slide the thermostat out towards the end that is connected to the wiring and through the hole in which leads to the wiring.



- 7** Using the pliers, remove (3) wire clips that connect to the switch.

Note: Mark the locations of each wire on the switch for ease of assembly.



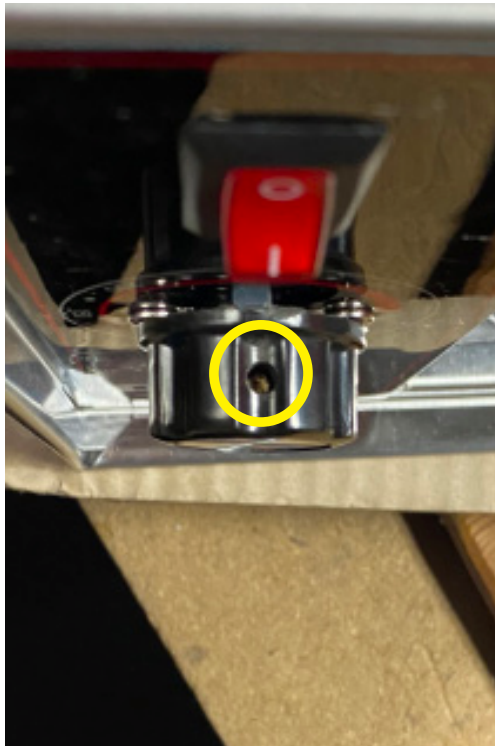


WISCO INDUSTRIES, INC.

PHONE: 608.835.3106 • TOLL FREE: 800.999.4726 • FAX: 608.835.7399 • www.wiscoind.com

MODEL 520
REGULATING THERMOSTAT REPLACEMENT
0022841SK

- 8** Remove the oven's control knob by using the small, flathead screwdriver.



- 9** Remove (2) screws that hold the thermostat to the faceplate.



- 10** Pull the end of the thermostat out and remove (2) wire clips.



- 11** Using the new thermostat, complete all steps in reverse order and you have successfully replaced your units regulating thermostat. Your unit is now ready for operation.