



WISCO INDUSTRIES, INC.

P.O. BOX 10 • OREGON, WISCONSIN 53575
TELEPHONE (608) 835-3106 • FAX (608) 835-8273 • (800) 999-4726
www.wiscoind.com

(PART # 0017190)

INSTRUCTIONS FOR MOUNTING THERMOSTAT BRACKET
695/850

The following instructions provide a step by step guide through the installation of the thermostat bracket. Before beginning, review the "Tool Check List" for required materials.

Tool Check List

- 1) Drill or punch for .203 diameter hole
- 1) Phillips screwdriver
- 1) 3/8" Wrench
- 1) Thermostat bracket mounting kit (Part #17190)

- 1. Remove the top cap.
- 2. Remove the humidity lid.
- 3. Punch .203 diameter hole. (See diagram 1 for location.)
- 4. Mount the end of the thermostat to the bracket using the cable clamp, phillips screwdriver and 3/8" wrench.
- 5. Mount the bracket to the humidity lid and adjust so the thermostat end will be equal distance from the *filler tube* and the *float sensor*. (Note: the *float sensor* should clear the *thermostat*.)

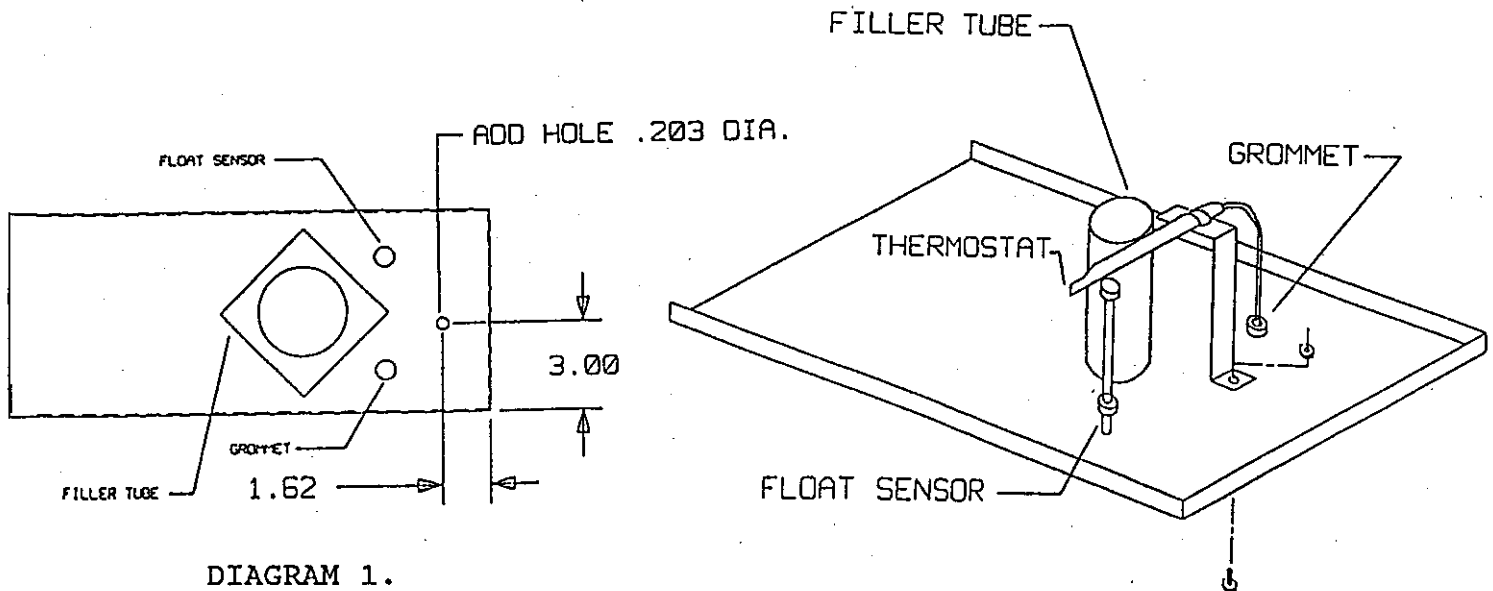


DIAGRAM 1.