


MODEL 690-16

MODEL 690-25

These warmers utilize circulating, heated air to maintain food above 150°F for extended periods of time. Their versatility is showcased with a shelving system that allows YOU to adjust the shelves to your specific needs resulting in an endless variety of food items it can accommodate.

FEATURES:

- Acrylic display
- Adjustable thermostat
- Temperatures from 80°F to above 150°F
- Single-door Option - Operator Serve
Power Cord on Control/Door Side
- 2-door pass-through Option
Recommended for Self/Customer Serve

690-16:

- Total height of available shelf space: 14"
- Unit comes with 2 shelves

690-25:

- Total height of available shelf space: 23"
- Unit comes with 4 shelves

AVAILABLE ACCESSORIES:

#0016388

Additional Shelf



WARNING: These products can expose you to chemicals including Nickel (Metallic) which are known to the State of California to cause cancer. For more information go to www.P65Warnings.ca.gov

ELECTRICAL DATA:

VOLTS:	120	AMPS:	5.3	WATTS:	640
---------------	-----	--------------	-----	---------------	-----

- Best when operated on an individual branch circuit
- Approx. 68" power cord length

DIMENSIONS:

- Model 690-16: 18"W × 18"D × 25"H
- Model 690-25: 18"W × 18"D × 34"H

SHIPPING INFORMATION:

- SHIPPING DIMENSIONS: 690-16: 24"W × 24"D × 32"H
690-25: 26"W × 26"D × 45"H
- SHIPPING WEIGHT: 690-16: 43 lbs.
690-25: 63 lbs.
- MODEL 690-25 MUST SHIP VIA FREIGHT TRUCK



FP140104-25 REV: A

IMPORTANT: Read the following safety and operation instructions to avoid damage to equipment or property.



Plug unit into a properly grounded electrical outlet of the correct voltage, size, and plug configuration for this unit. We recommend usage on an individual branch circuit of at least 15 amps for best results. Failure to do so may result in decreased performance of the warmer.



Exterior surfaces on unit may get hot. Use caution when touching these areas to avoid injury.



Only shatter resistant light bulbs which meet or exceed NSF Standards specifically designed for food holding units must be used. Breakage of bulbs not specially coated could result in personal injury and/or food contamination.



Unplug warmer when not in use.

EQUIPMENT SETUP:

Once the unit has been taken out of the shipping carton and has been unpackaged, check to make sure that all light bulbs are securely in their sockets.

CLEANING INSTRUCTIONS:



Unit is not waterproof. Do not submerge in water. Do not operate if unit has been submerged in water.



Unplug unit from power source, and allow to cool completely before performing any maintenance or cleaning.



The use of any type of ammonia, alcohol or chlorine based household cleaners will cause cracking of the door/enclosure and is not covered under any warranty. Use warm soapy water and a soft cloth only.

It is recommended that the interior and exterior surfaces be cleaned daily with a mild soap and damp cloth. Stubborn stains on base of unit and/or shelves may be removed with a non-abrasive cleaner and a damp cloth. Usage of an abrasive cleanser could scratch or damage the finish of your unit.

STEP 1: Unplug unit from electrical supply

STEP 2: Let unit cool before cleaning

STEP 3: Clean with warm soapy water and a soft cloth only

TO REPLACE DISPLAY LIGHT:



Only shatter resistant light bulbs which meet or exceed NSF Standards specifically designed for food holding units must be used. Breakage of bulbs not specially coated could result in personal injury and/or food contamination.



Disconnect the power supply cord, and wait until unit has completely cooled. Unscrew display light, and replace with a new bulb of the same style and wattage.

Unit not working:

- ## Display light not working

- Loud noise coming from unit:

- Unit not heating properly:

- Food product drying out:

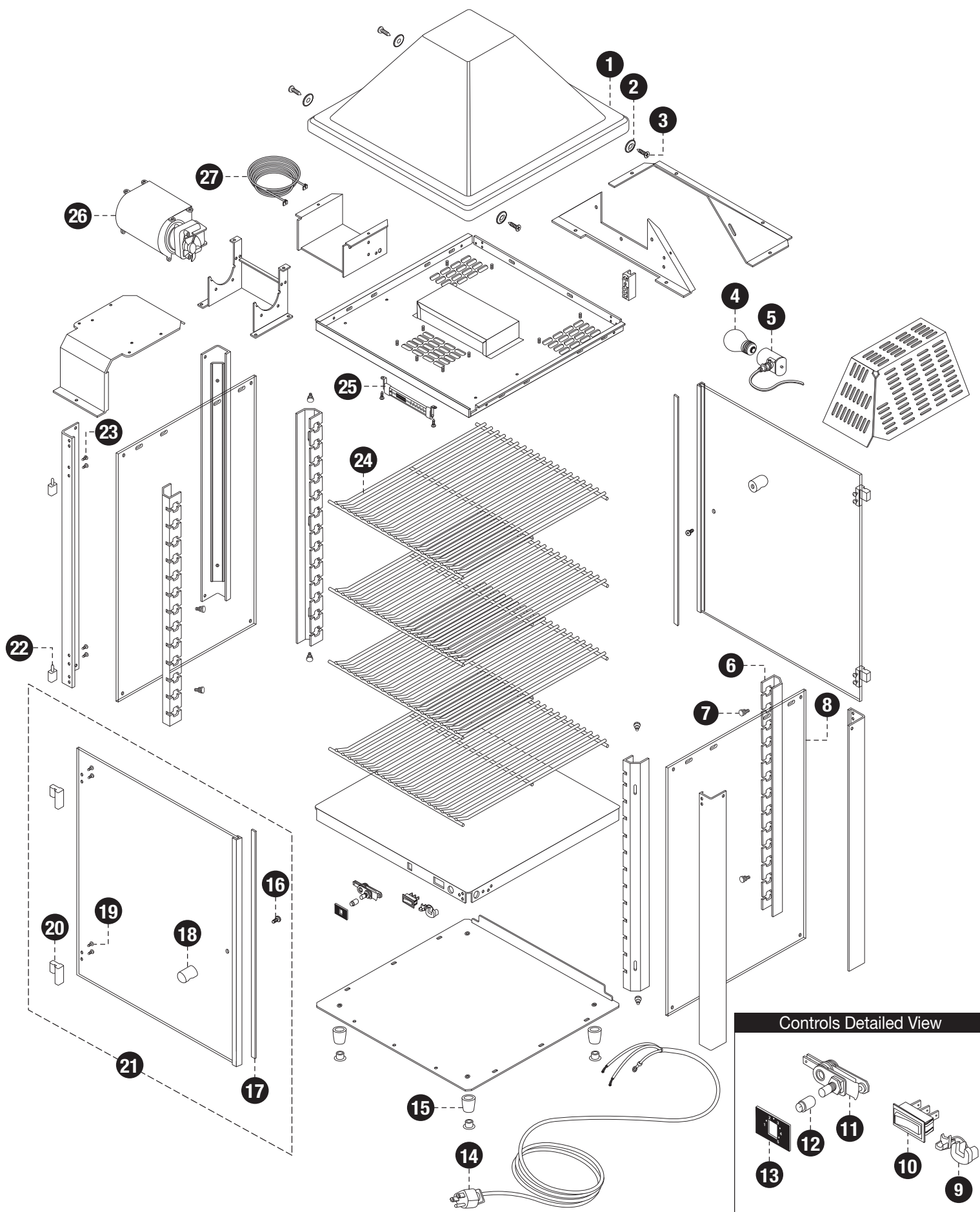
- Shelf life is determined by personal preference and can vary greatly dependant upon the product, how it is packaged, etc.

[illegible]

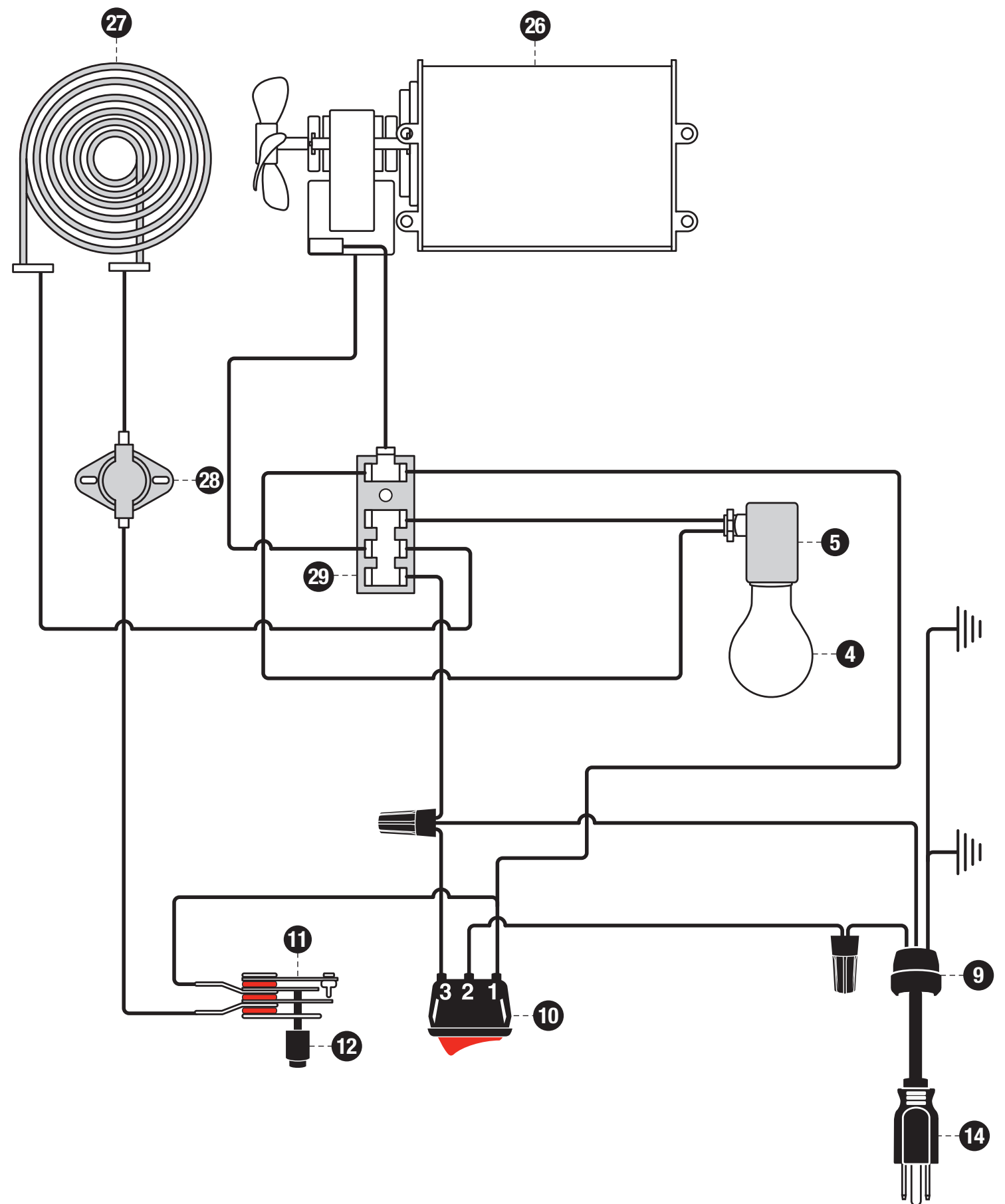
PARTS LIST:**MODEL 690-25 SERIES**

ITEM #	PART#	DESCRIPTION
1.	0016130-BLK	BLACK CANOPY
*	0016130-W	WHITE CANOPY
2.	0016129	CUP WASHERS
3.	0016128	HOOD SCREWS
4.	0017265	TUFFSKIN INCANDESCENT LAMP
5.	0016307	LIGHT SOCKET ASSY
6.	0016380	RACK HOLDER
7.	0016428	10-32 X 3/8 BRASS THUMB SCREW
8.	0016384	SIDE PANEL
9.	0016180	STRAIN RELIEF
10.	00486	POWER SWITCH
11.	0016190	REGULATING THERMOSTAT
12.	0016157	THERMOSTAT KNOB
13.	I013163	THERMOSTAT DIAL
14.	0016181	POWER CORD
15.	0023040SK	BOTTOM FOOT SERVICE KIT
16.	0016133	#8-32 SCREW
17.	0016802	MAGNETIC STRIP
18.	0018030	DOOR KNOB
19.	0016801	6-32 X 3/8 FHMS SCREW
20.	0016800F	FEMALE HINGE
21.	0016811-BLK	DOOR ASSY 690-25 (BLACK KNOB)
22.	0016800M	MALE HINGE
23.	0017323	6-32 X 1/4 SCREW
24.	0016388	WIRE RACK
25.	0016123	THERMOMETER
26.	0022309	BLOWER MOTOR
27.	0016447	550W @ 115V HEATING ELEMENT
28.	0017379	HIGH LIMIT THERMOSTAT
29.	0017762	TERMINAL BLOCK
*	I013756	RED "READY TO GO" DECAL 680/690
*	I013757	PIZZA "READY TO GO" DECAL 680/690

Model 690-25 Series Exploded View



Model 690-25 Series Wiring Diagram



1 YEAR REPLACEMENT/EXCHANGE

Wisco Industries, Inc. warrants its equipment against defects in materials and workmanship subject to the following conditions:

Should any product fail to function in its intended manner under normal use within the limits defined in this warranty, Wisco Industries will determine if the item is to be repaired or replaced by Wisco Industries. Failure to follow authorizing instructions may void any claim and/or warranty.

* Contact Wisco Industries for repair/replacement by calling (608) 835-3106 or toll free (800) 999-4726.

You can also email us at: contact@wiscoind.com

* An authorizing RMA# must be obtained through Wisco Industries BEFORE any warranty issues can be resolved. Failure to do so in advance may void the warranty/claim resulting in Wisco Industries not being responsible for any incurred expenses and/or charges.

* At time of call Wisco Industries will assist you in:

- getting your unit replaced/exchanged
- and/or obtaining repair parts
- and/or authorizing a service agent

This warranty covers products shipped into the 48 contiguous United States, Hawaii and metropolitan areas of Alaska only. Warranty for international or areas not listed above will consist of replacement of parts only. There will be no labor coverage and parts must be shipped to an address within the 48 contiguous United States, Hawaii or metropolitan areas of Alaska only.

Time Period

One year from date of shipment from our manufacturing facility. Parts replaced under this warranty are warranted for the un-expired portion of the original product warranty only.

Exclusions

The following conditions are not covered by warranty:

- Equipment failure relating to improper installation and improper utility connection or supply.
- Equipment that has not been properly maintained or damage from improper cleaning and/or water damage to controls.
- Equipment that has not been used for its intended purpose or has been subject to misuse or misapplication, neglect, abuse, accident, alteration, negligence, damage during subsequent transit, delivery or installation, fire, flood, riot or act of god.
- Equipment that has the model number or serial number removed or altered.

WISCO INDUSTRIES, INC. DISCLAIMS AND EXCLUDES ANY AND ALL OTHER EXPRESS OR IMPLIED WARRANTIES, INCLUDING WITHOUT LIMITATION, ANY AND ALL WARRANTIES OF MERCHANTABILITY OR FITNESS FOR A PARTICULAR PURPOSE.

Buyer agrees that its SOLE AND EXCLUSIVE REMEDY against Wisco and Wisco's SOLE AND EXCLUSIVE LIABILITY arising out of any defect or nonconformity in the product shall be replacement/exchange of such nonconforming countertop food service equipment at Wisco's expense. No countertop food service equipment shall be returned without Wisco's consent. IT IS AGREED THAT WISCO'S MAXIMUM LIABILITY SHALL NOT IN ANY CASE EXCEED THE SALE PRICE FOR THE COUNTERTOP EQUIPMENT CLAIMED TO BE DEFECTIVE OR NONCONFORMING.

Without limiting the generality of the foregoing, SUCH WARRANTIES DO NOT COVER: Glass, plastic enclosures/panels, door assemblies, hardware, light bulbs & wire pizza oven heating elements.

SHIPPING DAMAGE

If the outside packaging of your order is visibly dented, crushed, torn or otherwise significantly damaged, or if you move the carton and you hear broken glass, please reject the shipment while driver is still with you if possible. Please call us at (800)999-4726 or email contact@wiscoind.com to notify us of the issue. We will confirm the damage with the carrier and re-ship your order immediately.

RETURN POLICY

You may return any unused, undamaged items within 30 days of receipt at your expense. We will issue a refund in the form of your original payment, less a 20% restock fee. Wisco Industries will not reimburse any shipping and handling fees. All returns must be received in resalable condition. Wisco Industries will not accept a return with shipping damage.

If you would like to return an item please call us at 608-835-3106 or toll free at 1-800-999-4726 and ask for our Food Service Equipment Division or you may send an email to us at: contact@wiscoind.com You will be given a return # and return instructions. We can not accept returns without a return #. Please be sure to include a copy of the packing list with the return.