



WISCO INDUSTRIES, INC.

PHONE : 608.835.3106 • TOLL FREE : 800.999.4726 • FAX: 608.835.7399 • www.wiscoind.com

MODEL 421
POWER BOARD REPLACEMENT
0022927SK

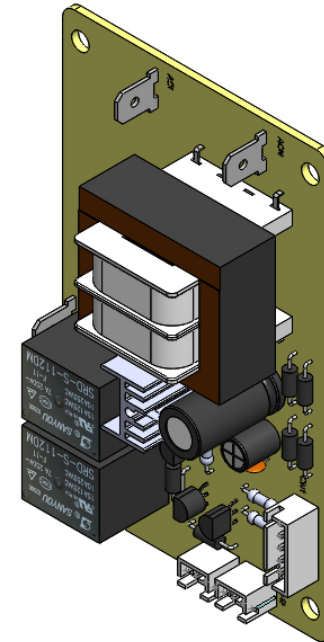
DESCRIPTION

This document illustrates how to replace the Power Board for model 421.



TOOLS NEEDED

- #2 Phillips Screwdriver (Stubby Recommended)
- 7 mm Socket Wrench or Driver
- Pliers



PARTS INCLUDED

- (1) 0022927 - Power Board



WISCO INDUSTRIES, INC.

PHONE : 608.835.3106 • TOLL FREE : 800.999.4726 • FAX: 608.835.7399 • www.wiscoind.com

MODEL 421
POWER BOARD REPLACEMENT
0022927SK



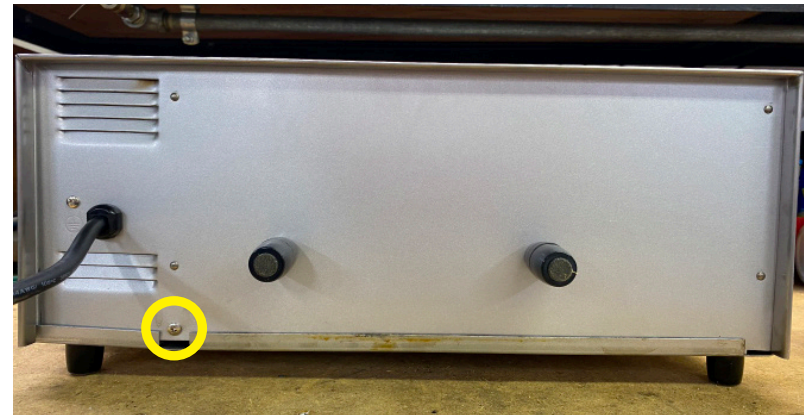
UNPLUG UNIT FROM OUTLET AND ALLOW TO COOL

1 Remove the grill and clean out tray from the unit.

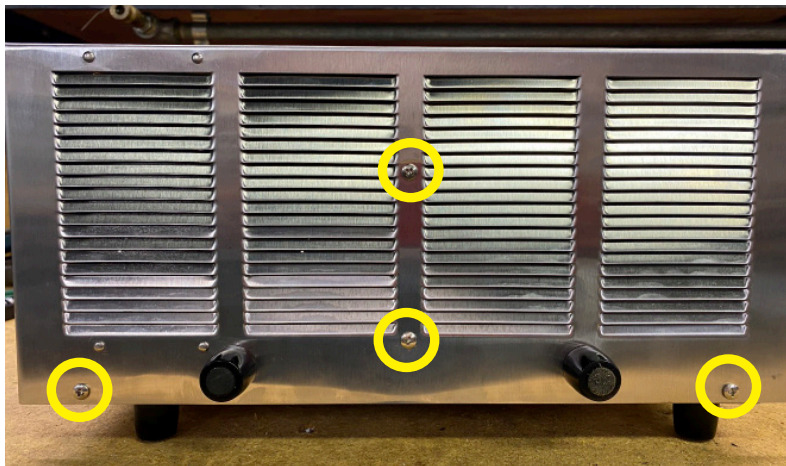


(1) on the front

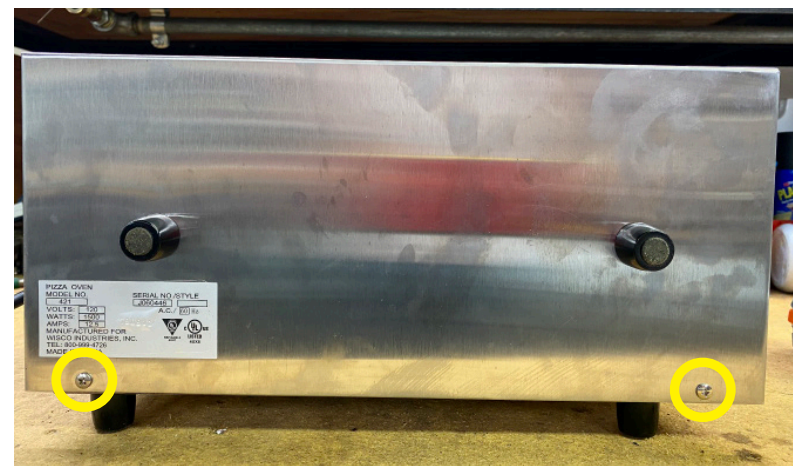
2 Remove (8) screws that attach the outer housing to the inside of the unit.



(1) on the rear



(4) on the right side



(2) on the left side

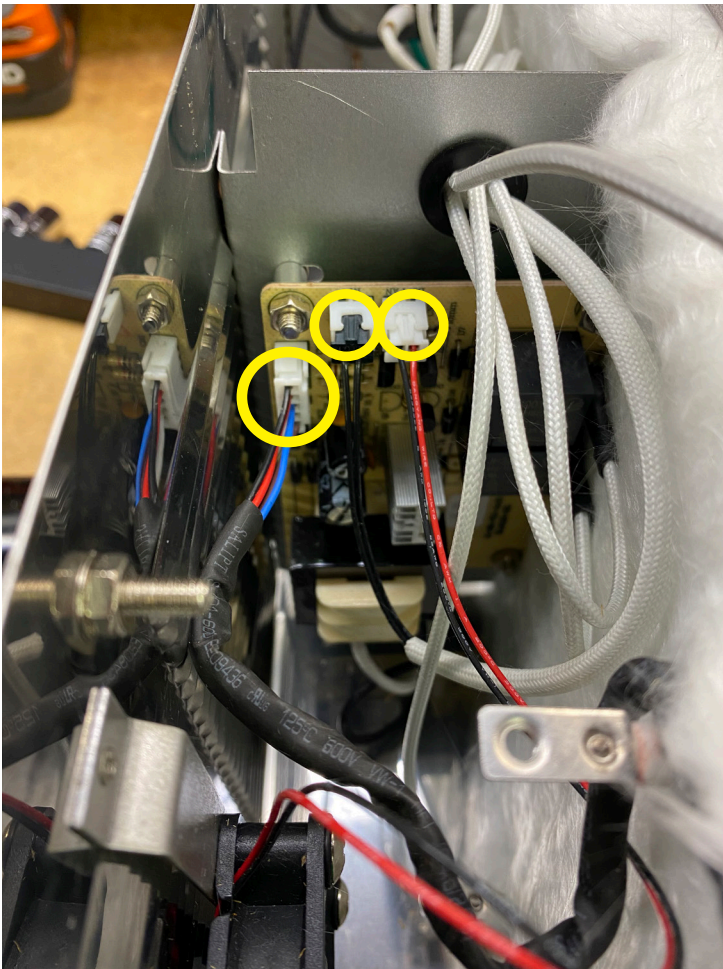


WISCO INDUSTRIES, INC.

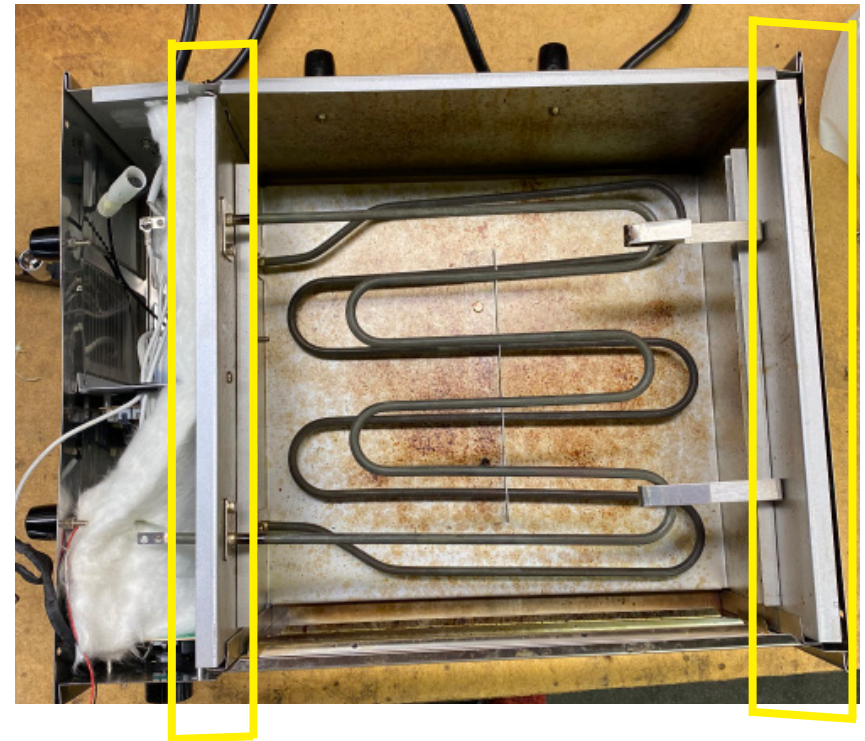
PHONE : 608.835.3106 • TOLL FREE : 800.999.4726 • FAX: 608.835.7399 • www.wiscoind.com

MODEL 421
POWER BOARD REPLACEMENT
0022927SK

- 3** Flip the unit over and remove the bottom. Unplug the wires that are connected to the power board. (**Note:** Mark where each wire goes for convenience during reassembly)



- 4** Gently remove the inside of the unit by lifting on two sides of the housing. Place on top of the outer housing.



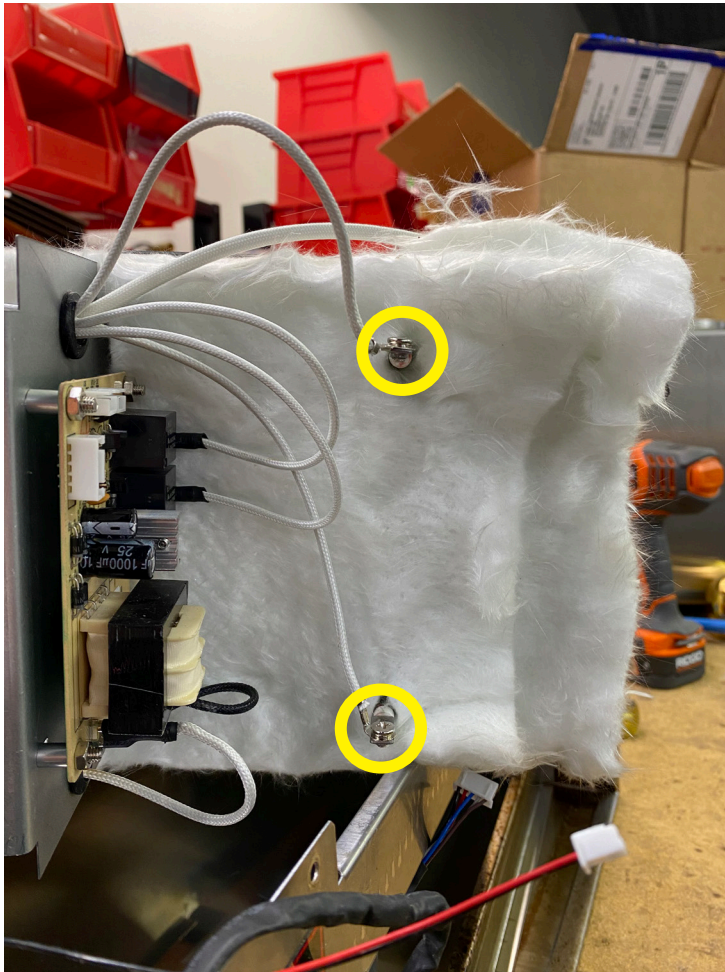


WISCO INDUSTRIES, INC.

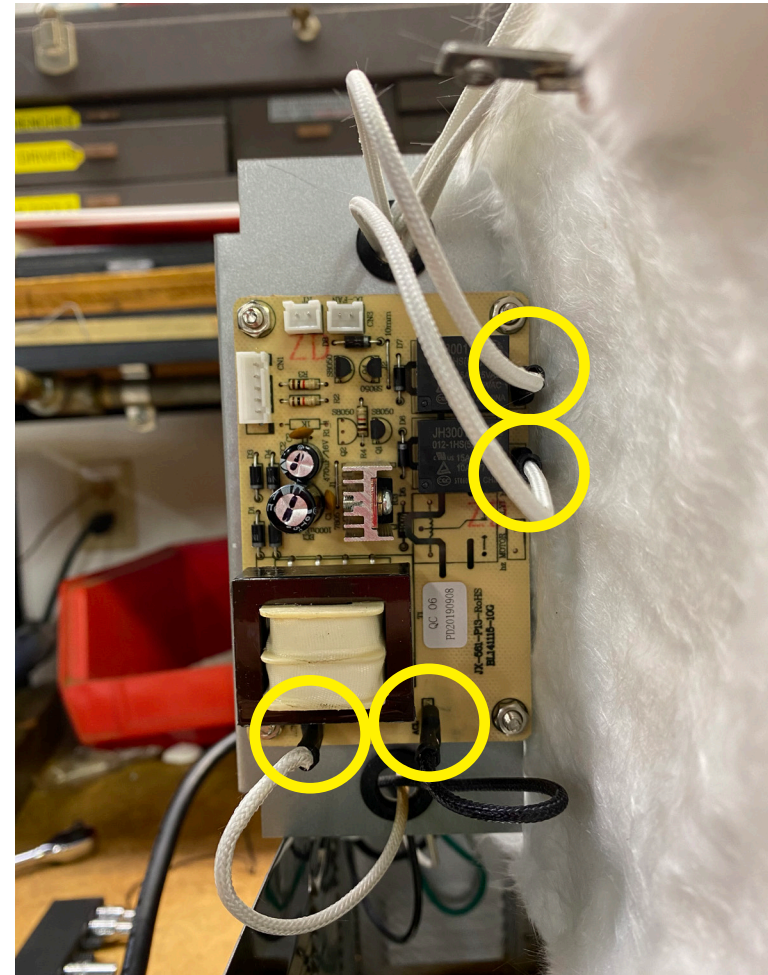
PHONE : 608.835.3106 • TOLL FREE : 800.999.4726 • FAX: 608.835.7399 • www.wiscoind.com

MODEL 421
POWER BOARD REPLACEMENT
0022927SK

- 5** Remove (2) screws that connect to the heating element.



- 6** Using the pliers, gently remove (4) wire clips connected to the power board. (**Note:** For convenience during reassembly, mark where these wire clips are located.)



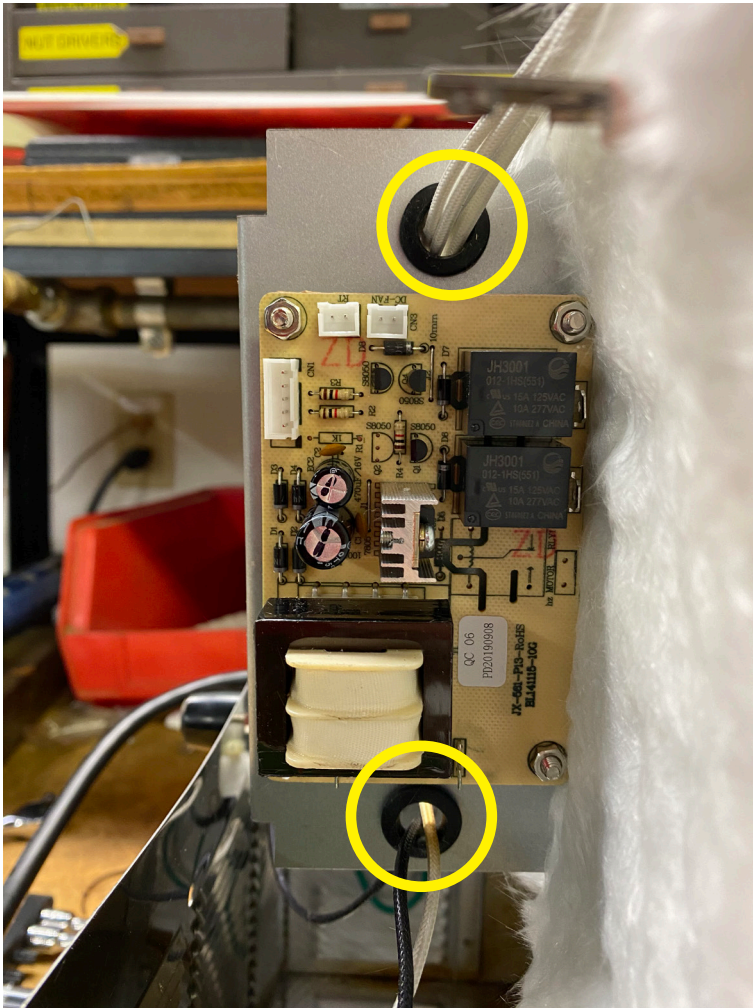


WISCO INDUSTRIES, INC.

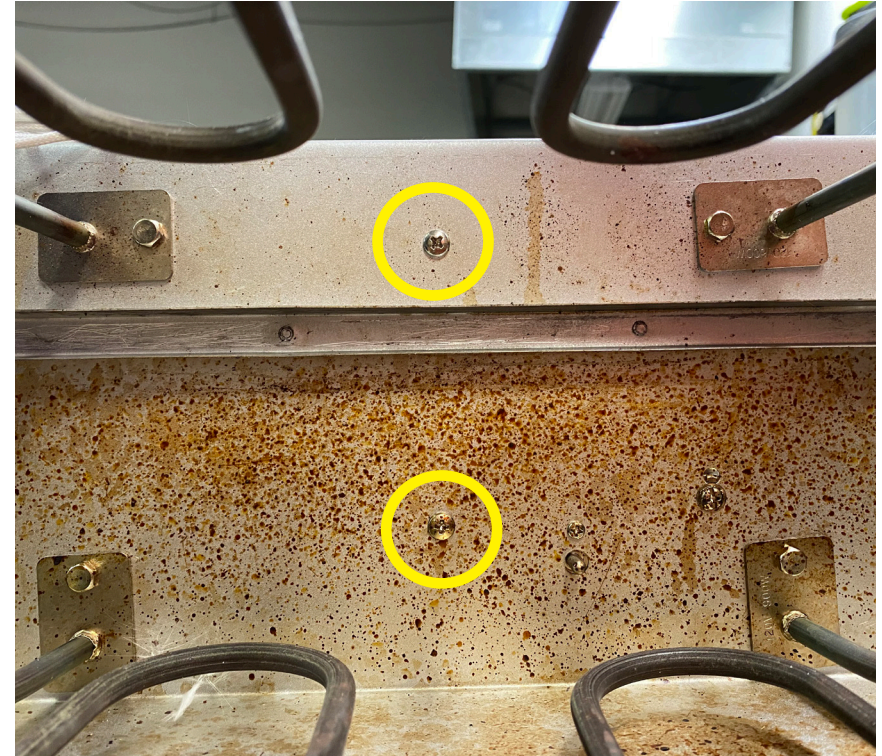
PHONE : 608.835.3106 • TOLL FREE : 800.999.4726 • FAX: 608.835.7399 • www.wiscoind.com

MODEL 421
POWER BOARD REPLACEMENT
0022927SK

- 7** Pull the loose wires through the holes on the power board's mount.



- 8** Remove (2) screws that connect the power board mount to the inside of the unit.



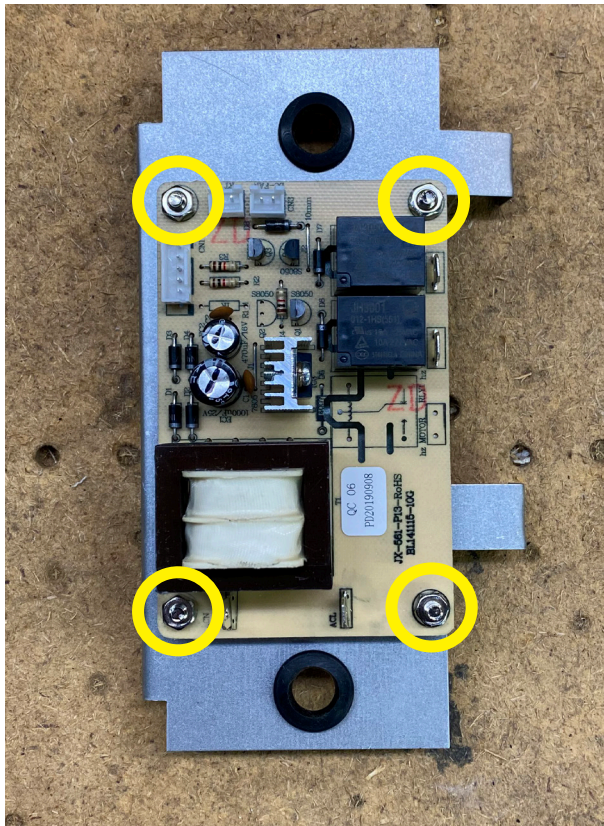


WISCO INDUSTRIES, INC.

PHONE : 608.835.3106 • TOLL FREE : 800.999.4726 • FAX: 608.835.7399 • www.wiscoind.com

MODEL 421
POWER BOARD REPLACEMENT
0022927SK

- 9** Using the 7 mm socket wrench or driver, remove (4) nuts that connect the power board to the mount. (**Note:** The screwdriver may be needed for assistance)



- 10** Using the new board, complete all steps in reverse order and you have successfully replaced your units power board. Your unit is now ready for operation.

